

Teddy Toddle

Everything you need
to help you make
the most of your
Teddy Toddle!



Fundraising guide

Manchester Foundation
Trust **Charity**

Humphrey's Top 10 Tips

Teddy
Toddle

Meet Humphrey, our Charity mascot!

Here, Humphrey will share his tips to help you make the most of your Teddy Toddle event.



- 1** You can choose to support any of our individual hospitals or clinical services with your Teddy Toddle. Simply let us know when you register which hospital you are fundraising for.
- 2** Select an appropriate distance for your Teddy Toddle and if possible have a shorter route for the toddlers and a longer route for the pre-schoolers. You could do laps of the building, or hold your Toddle outside in the local park, playing field, or even around an obstacle course.
- 3** Why not ask the children to wear something green to take part in, in honour of our mascot Humphrey, or you could opt for a fancy dress Teddy Toddle instead!
- 4** Ask each child to bring in their favourite teddy bear to Toddle with.
- 5** Finish your Teddy Toddle with a teddy bears' picnic and serve teddy-shaped sandwiches.
- 6** You could hold extra fundraising activities on the day of your Toddle, such as guess the weight of the cake, guess the number of sweets in the jar, guess the name of the (staff) baby competition – all aimed at staff and parents.
- 7** Organise a cake or biscuit baking or decorating session for some of the older children and bake or create teddy-shaped treats.
- 8** Don't forget to use our Teddy Toddle activity sheets for your staff and helpers to use with the children on the day of your Toddle.
- 9** Remember to say a huge 'well done' and 'thank you' to all of the children that take part, and help them understand how their fundraising makes a difference to poorly children and patients.
- 10** Collect in your sponsorship money on the same day as your Toddle – this will save you from having to chase it up afterwards.
- 11** We ask all our supporters to set up an online fundraising page so you can keep an eye on your fundraising and easily share with friends, family and colleagues. To set up your Teddy Toddle event page visit [JustGiving](#).
- 12** Finally, please send any monies raised to the charity office six weeks after your event. Details of how to send in your money are on the fundraising form which you'll find inside this pack.



In support of:

North Manchester General Hospital
Manchester Royal Infirmary
Wythenshawe Hospital
Royal Manchester Children's Hospital
Manchester Royal Eye Hospital

Saint Mary's Hospital
University Dental Hospital of Manchester
Withington Community Hospital
Trafford General Hospital
Altrincham Hospital

Teddy Toddle



Dear Parent/Carer

We are delighted to hear that your child's nursery, crèche, pre-school or playgroup is hosting a Teddy Toddle event in support of our family of NHS Manchester hospitals, which includes Royal Manchester Children's Hospital and Saint Mary's Hospital.

Teddy Toddle is a short, sponsored walk and a fun and easy way for you and your child to make a difference for patients, young and old, cared for in our hospitals. Any sponsorship you are able to raise will support our patients, and their families, ensuring they receive the very best care in the very best facilities. If you would like your sponsorship to support one of our individual hospitals, please let us know.

If you would like more information about the work we do or how else you can get involved, please visit mftcharity.org.uk or call us on **0161 276 4522**.

On behalf of our patients, thank you.

Yours faithfully

The Community Fundraising Team

In support of:

North Manchester General Hospital
Manchester Royal Infirmary
Wythenshawe Hospital
Royal Manchester Children's Hospital
Manchester Royal Eye Hospital

Saint Mary's Hospital
University Dental Hospital of Manchester
Withington Community Hospital
Trafford General Hospital
Altrincham Hospital



mftcharity.org.uk

Registered charity 1049274.

Manchester Foundation
Trust **Charity**

The difference you will make

As a Charity our mission is simple: to support the excellence in treatment, research and care we provide to our patients each and every day. We want to make a real difference to the people we treat – young and old – by making sure they receive the very best treatment in the very best facilities.

By taking part in a Teddy Toddle, you will be directly helping to make this happen. Your support will make a lasting difference to our hospitals, NHS teams and patients, both now and in the future. Here are just some of the ways you could make a difference:

£20

could purchase an animatronic pet – a lifelike cat or dog to provide companionship for a patient with dementia.

£50

could support our specialist Healthcare Play team, giving our younger patients the opportunity for playful, fun distraction and therapies during their time in hospital.

£100

could help to fund a tactile and sensory wayfinding system to enable blind and visually impaired visitors to find their way around our eye hospital independently.

£250

could provide home comforts in specialist bereavement rooms for grieving parents experiencing the loss of their new-born child.

£400

could contribute towards vital research projects to improve our understanding of illnesses and invest in life-saving therapies.



We're hosting our Teddy Toddle on:

.....

In support of:

.....

Will you join us?



mftcharity.org.uk



Manchester Foundation
Trust **Charity**

We did it!

Thank you to everyone who supported our Teddy Toddle. We raised a wonderful

£

In support of:



mftcharity.org.uk

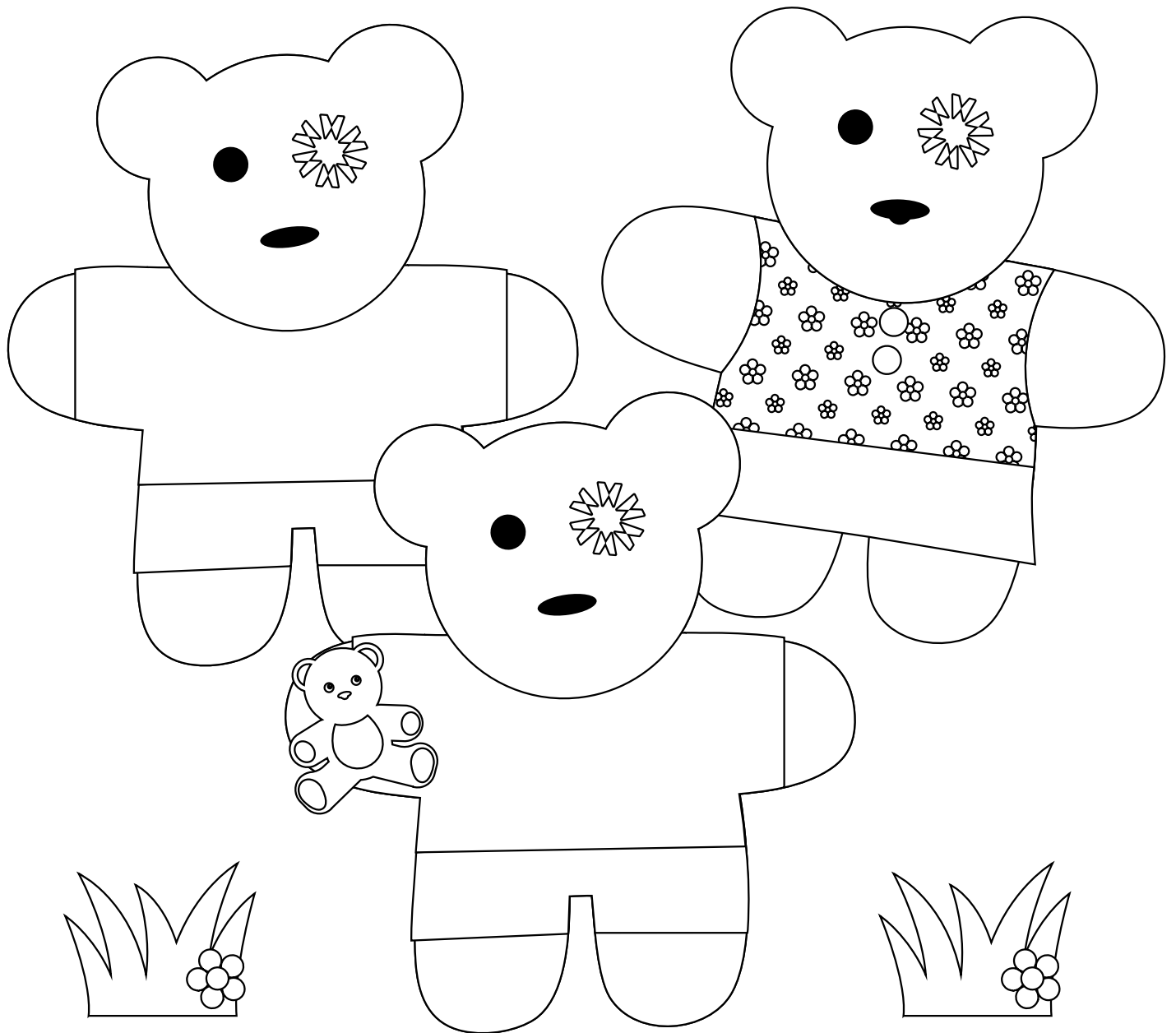


Manchester Foundation
Trust **Charity**

Teddy Toddle

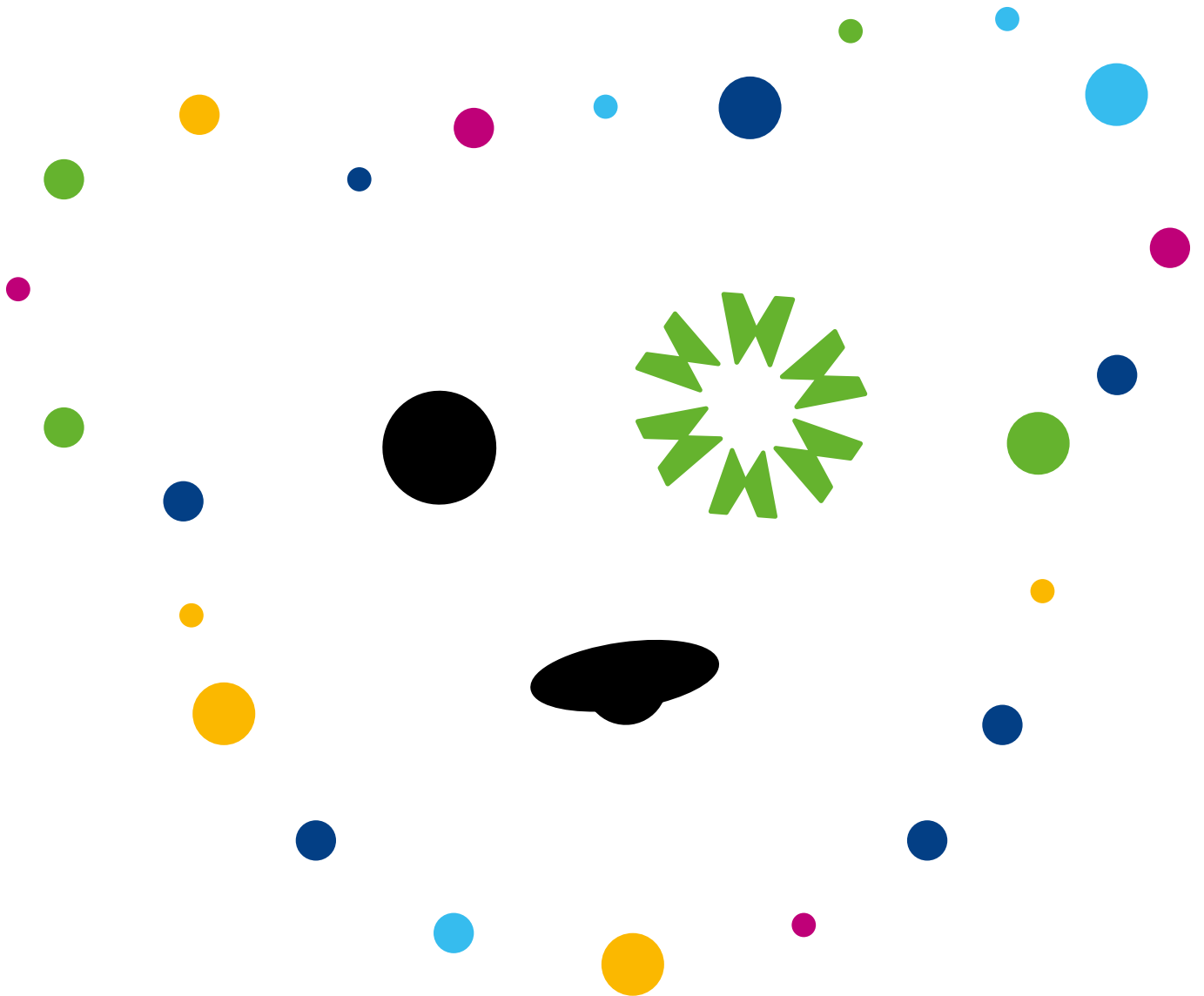


Activity Sheets for your Teddy Toddlers to complete!





Join the dots to draw your own Humphrey bear!

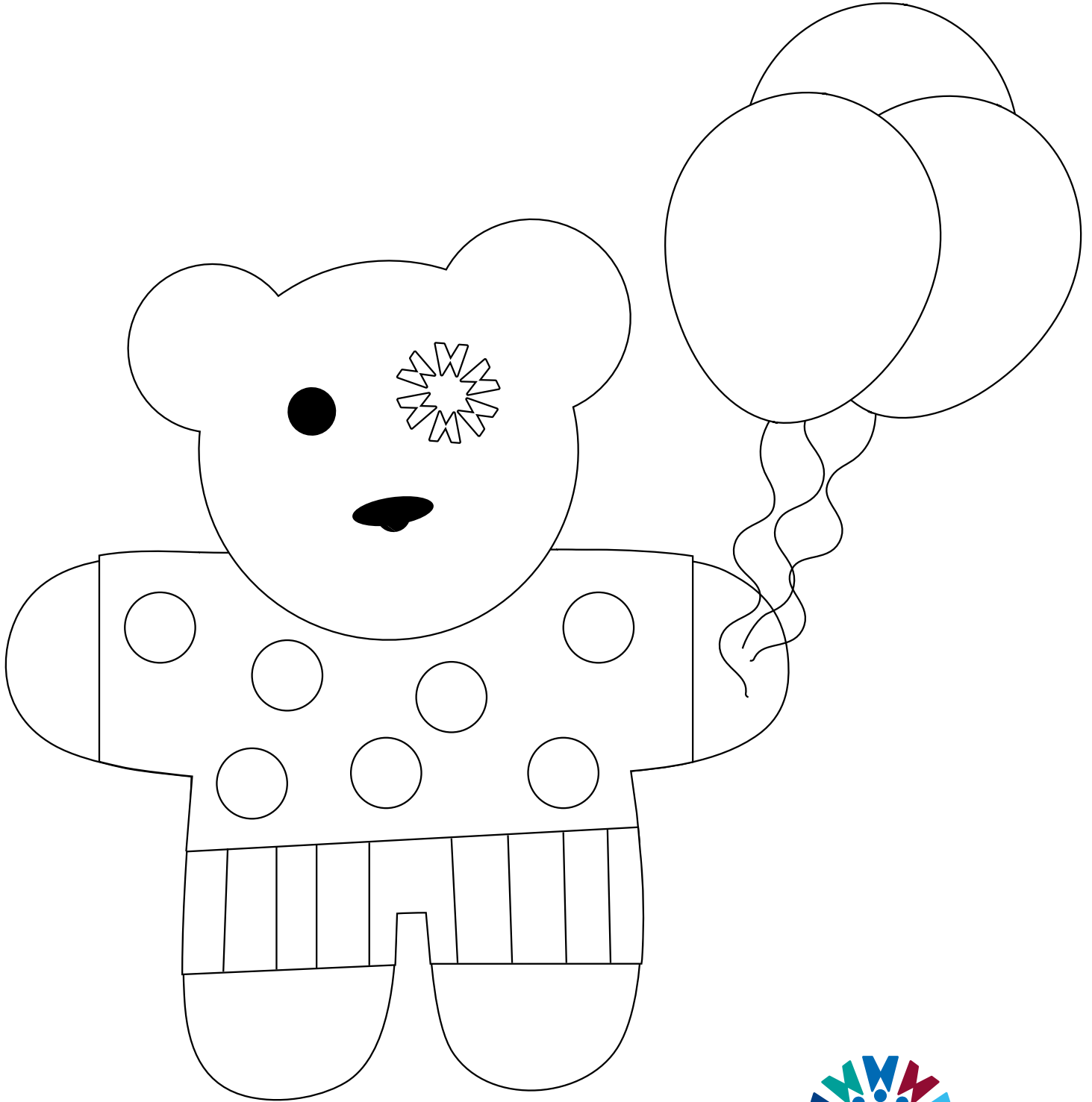


mftcharity.org.uk

Registered charity 1049274.

Manchester Foundation
Trust **Charity**

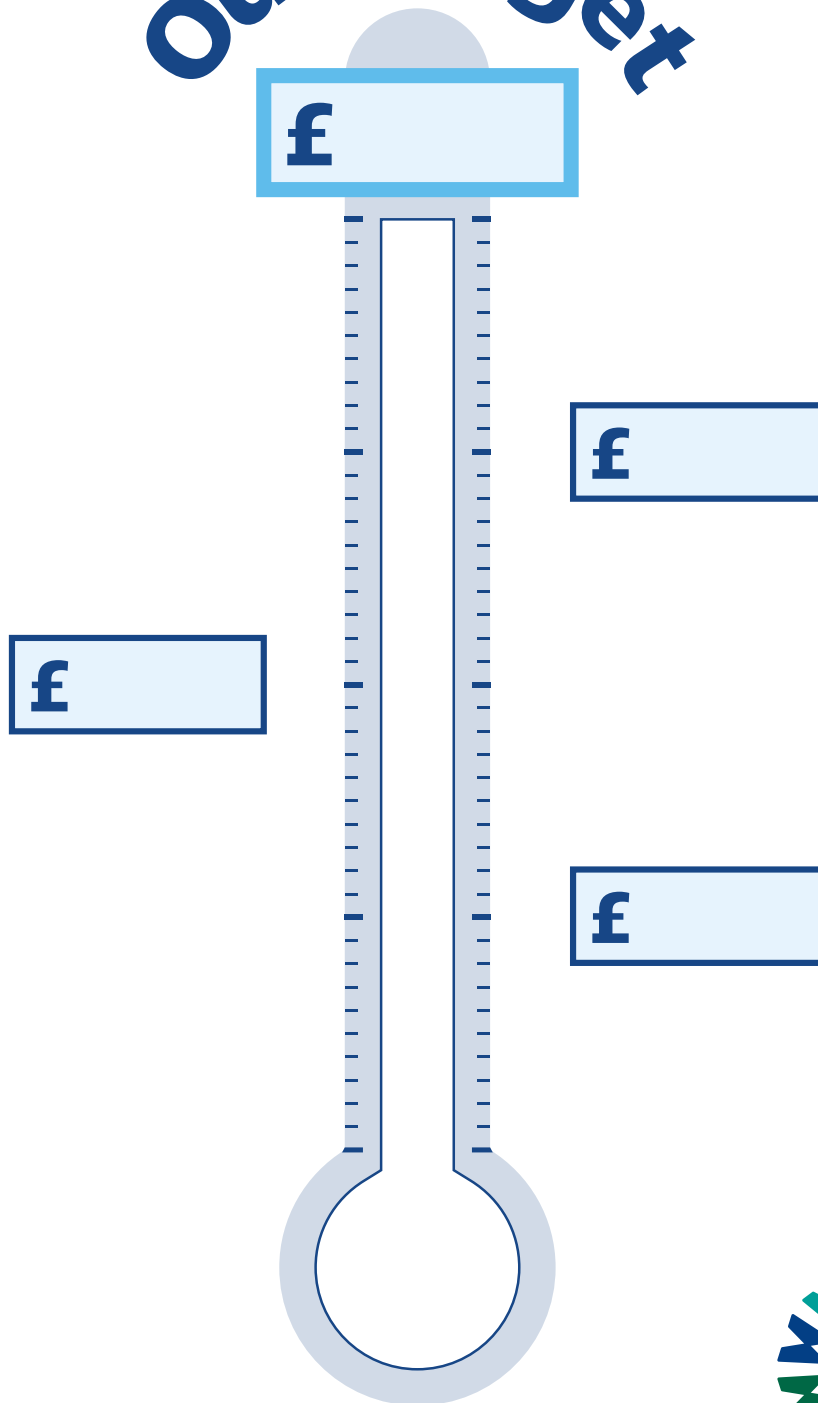
Colour Humphrey the bear in so that he's all ready to Teddy Toddle!



Teddy Toddle



Our Target



Donation Payment Form

Thank you for taking part in Teddy Toddle in support of our family of hospitals. This form provides guidance on how to return your fundraising.

Please fill in your details below:

Name:

Name of organisation (if applicable):

Address:

Postcode:

Total amount raised:

If you would like your sponsorship to support a specific hospital, please provide details here:

Donations to be made by:

Online – Please visit mftcharity.org.uk to make a donation online.

Please provide details of the date you made the payment here: _____

Cheque – Cheques should be made payable to Manchester Foundation Trust Charity.

If you are paying by cheque, please detail the total value and number of cheques enclosed: _____

Bank transfer – Please contact us for details on **0161 276 4522**.

Once you have made the payment, please provide details of payment reference and the date you made the payment here:

Please let us know if you would like to receive a letter of thanks.

By email please

By post please

Please tick here if you would like to sign up to receive our e-newsletter, to stay informed about more charity news, projects and events you could get involved in. If you haven't already, please provide your preferred email address below:

You can unsubscribe from receiving our charity e-newsletter at any time and you can view our Privacy Policy at mftcharity.org.uk/privacy-policy.

How to return your form: By email: charity@mft.nhs.uk

By post: Manchester Foundation Trust Charity, Cobbett House, Oxford Road, Manchester M13 9WL

Thank you!



Manchester Foundation
Trust **Charity**

Teddy Toddle

THANK YOU
for making a
difference to the
patients and families
who are treated
by our family of
hospitals.

Our hospital family:

North Manchester General Hospital, home to the region's specialist infectious diseases unit.

Manchester Royal Infirmary, a national centre for services including kidney and pancreas transplants, liver surgery and rheumatology.

Wythenshawe Hospital, recognised as a centre of clinical excellence, with specialisms in heart and lung transplantation, cancer and breast care services and respiratory conditions.

Royal Manchester Children's Hospital, the largest and busiest children's hospital in the UK.

Manchester Royal Eye Hospital, providing world class ophthalmic care to the people of Manchester and the North West, and first hospital in the country to offer community eye clinics on the high street.

Saint Mary's Hospital, providing world class medical services for women, babies and children as well as a comprehensive Genomics Centre and an internationally recognised teaching and research portfolio.

The University Dental Hospital of Manchester, a major dental teaching hospital for the UK.

Withington Community Hospital, offering diagnostic treatment, day surgery and community services.

Trafford General Hospital, the birthplace of the NHS.

Altrincham Hospital, providing general specialist and diagnostic and outpatient services, including kidney dialysis clinics.



  Manchester Foundation Trust Charity

 @MFT_Charity  @MFTCharity

Registered with the Charity Commission as Manchester University NHS Foundation Trust Charity.
Registered Charity 1049274.

Manchester Foundation
Trust **Charity**